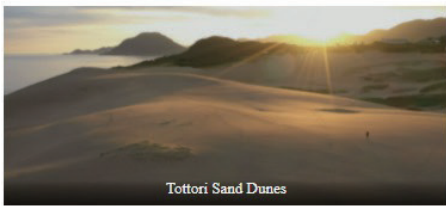


About Iwami



Home > About Iwami

Tottori Prefecture has “Tottori Sand Dunes”, and Iwami has a lot of charms such as the world-class sea, delicious dishes made with seafood from the Sea of Japan, and carefully selected hot springs! The beaches of white sand and blue pine are scattered among the cliffs, caves, caves, and strange rocks that have been eroded by the rough waves and wind and snow of the Sea of Japan. The sea designated as a marine park is highly transparent, and you can see subtropical fish riding in warm currents, and marine sports such as snorkeling and sea kayaking are popular along with swimming.



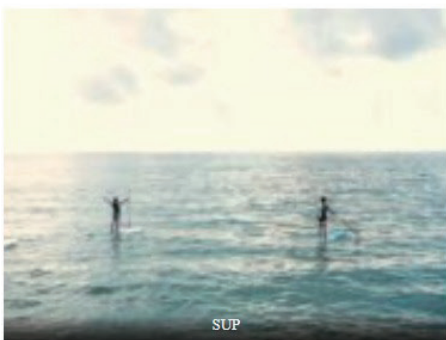
Tottori Sand Dunes



Uradome Premier Boat



スノーバダイビング、ブルーライン田舎 Diving



SUP



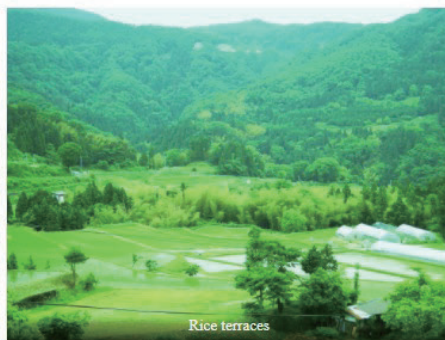
Beach art



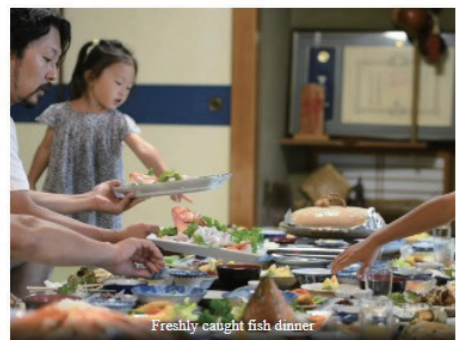
Uradome Pleasure Boat



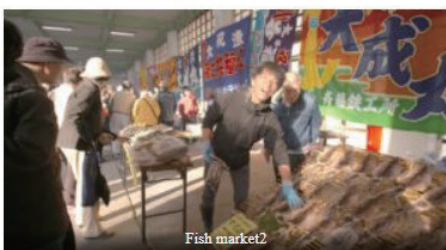
Anime sanctuary



Rice terraces



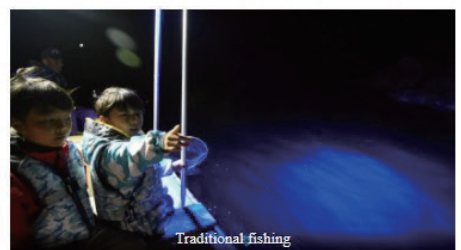
Freshly caught fish dinner



Fish market2



Sunset fishing boat



Traditional fishing